

Health Impact Assessment in a (Rural) Community

Rachel Zenuk, MPH
Pinal County Public Health



P I N A L • C O U N T Y

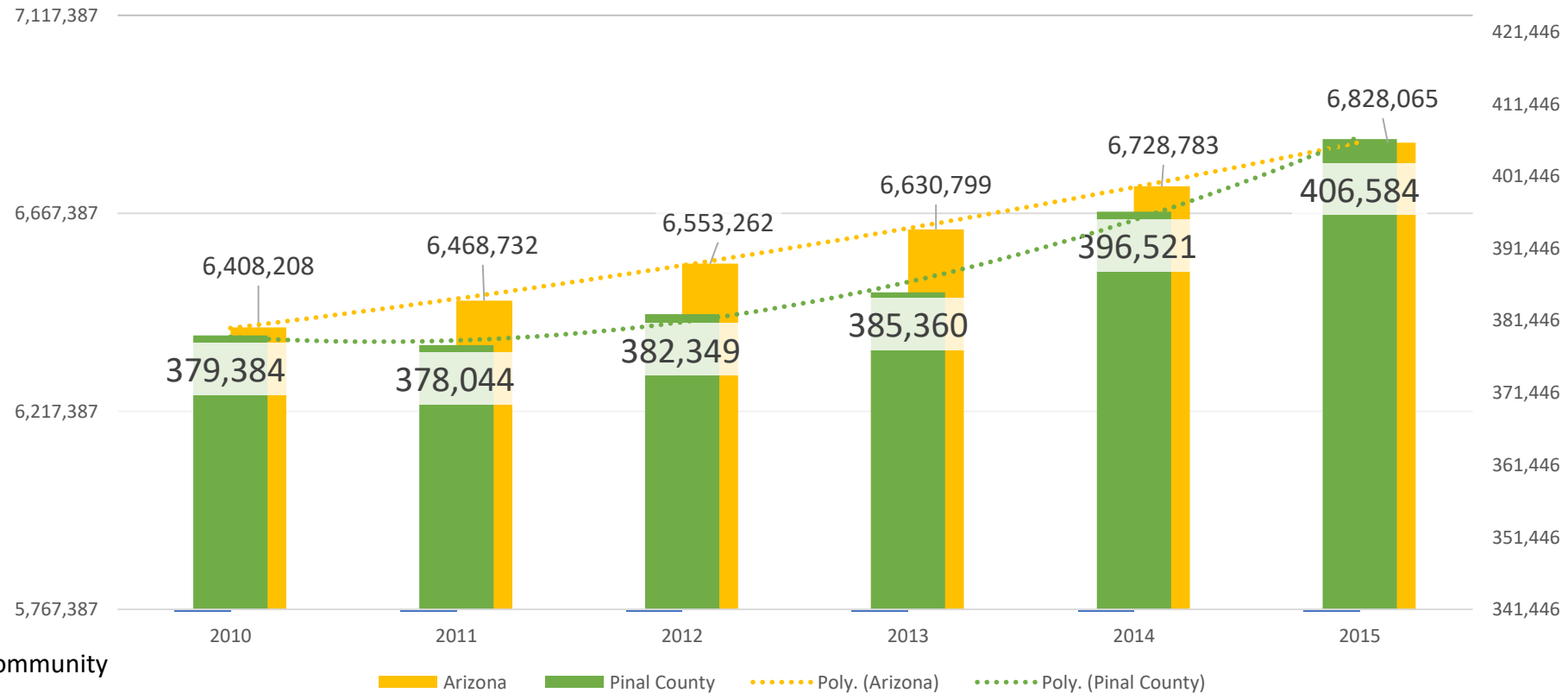


PINAL COUNTY

Who Lives in Pinal County?

406,500 residents

\$45.9k median income

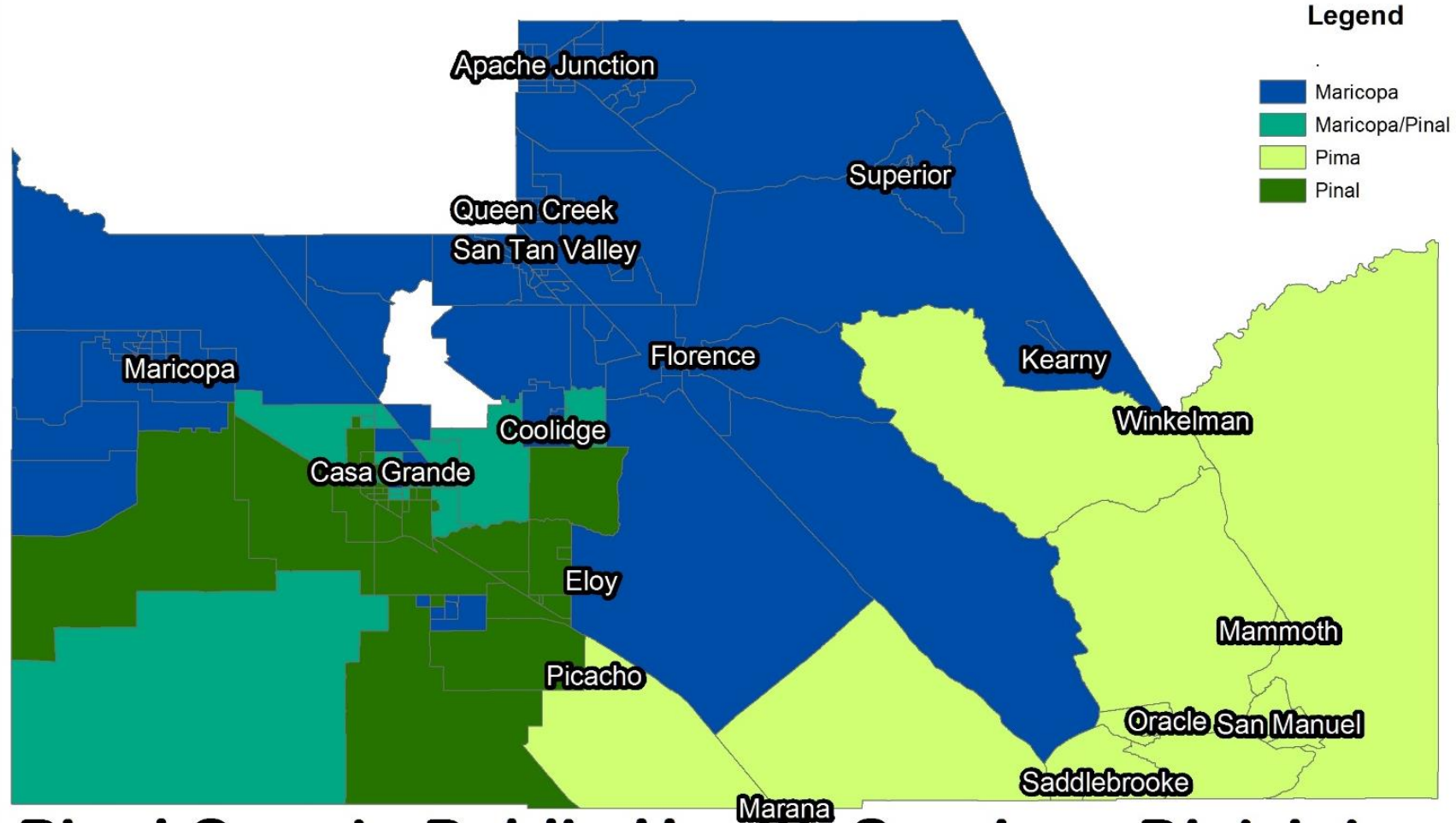


Source: U.S. Census Bureau, 2011-2015 American Community Survey 5-Year Estimates



PINAL COUNTY

Majority of Hospital/ER Admissions By Hospital Location (County), 2010-2014



Pinal County Public Health Services District

Data Sources:

Hospital Discharge Data, ADHS Office of Vital Records

American Community Survey 2014 5-Year Estimates

Linking Planning & Health



PINAL COUNTY
wide open opportunity

Michael Baker
INTERNATIONAL



What is Health?



PINAL COUNTY
wide open opportunity

- Health is a state of complete physical, mental and social wellbeing and not merely the absence of disease or infirmity.

- World Health Organization



Health Determinants



PINAL COUNTY
wide open opportunity



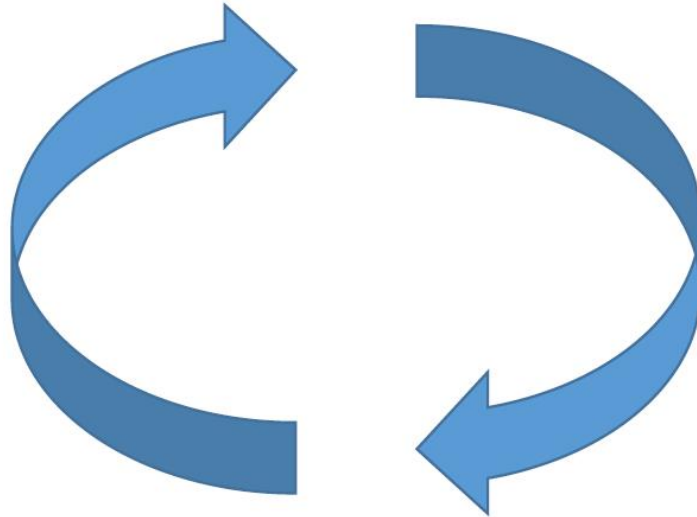
Health and the Built Environment



PINAL COUNTY
wide open opportunity

Planning Issues

- Land Use Patterns
- Density (Housing)
- Preservation
(Land & Structures)
- Employment Growth
- Mobility/Connectivity
(Vehicular, Bike & Ped)
- Access/Choices
(Activities, Food, etc.)



Health Issues

- Physical Inactivity
- Poor Diet & Nutrition
- Cost of housing
- Decreased Social Capital
- Poor Air Quality
- Increase in Car Crashes
- Increase in Bike/Ped Injuries
- Poor Water Quality

What is a HIA?



PINAL COUNTY
wide open opportunity

- HIA is a process that helps evaluate the potential health effects of a plan, project, or policy before it is built or implemented.
- HIA brings potential positive and negative public health impacts and considerations to the decision-making process for plans, projects, and policies that fall outside traditional public health arenas, such as transportation and land use.
- An HIA provides practical recommendations to increase positive health effects and minimize negative health effects.

What is a HIA?



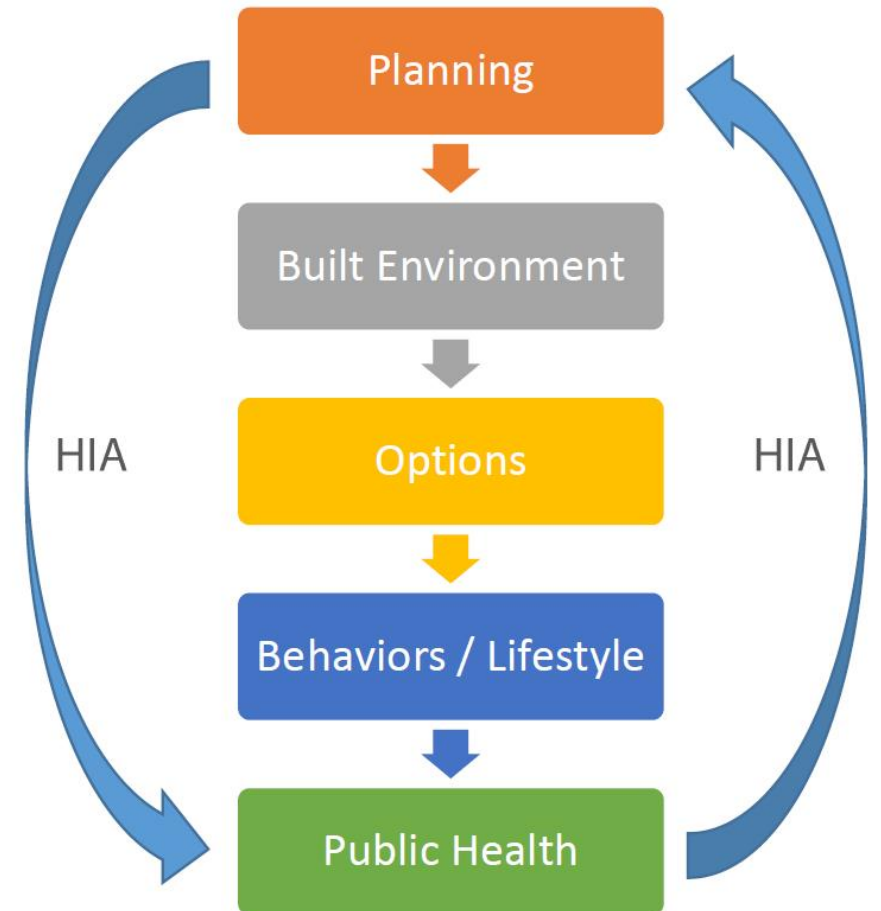
PINAL COUNTY
wide open opportunity

How might the proposed project, plan, policy



And potentially lead to predicted health outcomes?

- Human Impact Partners



HIA Steps



PINAL COUNTY
wide open opportunity

Screening

- Determines whether a proposal is likely to have health impacts and,
- Whether the HIA will provide useful information

Scoping

- Establishes the scope of health impacts that will be included in the HIA,
- The populations affected,
- The sources of data and,
- Methods to be used

Assessment

- First describes the baseline health status of the affected population
- Then assess potential impacts

Recommendations

- Suggest alternatives that could be implemented to improve health or,
- Identify actions that could be taken to manage health effects

Reporting

- presents findings and recommendations to stakeholders and decision-makers

Monitoring and Evaluation

- Includes monitoring the implementation of recommendations
- Evaluates process, impact or outcomes

Project Background



PINAL COUNTY
wide open opportunity

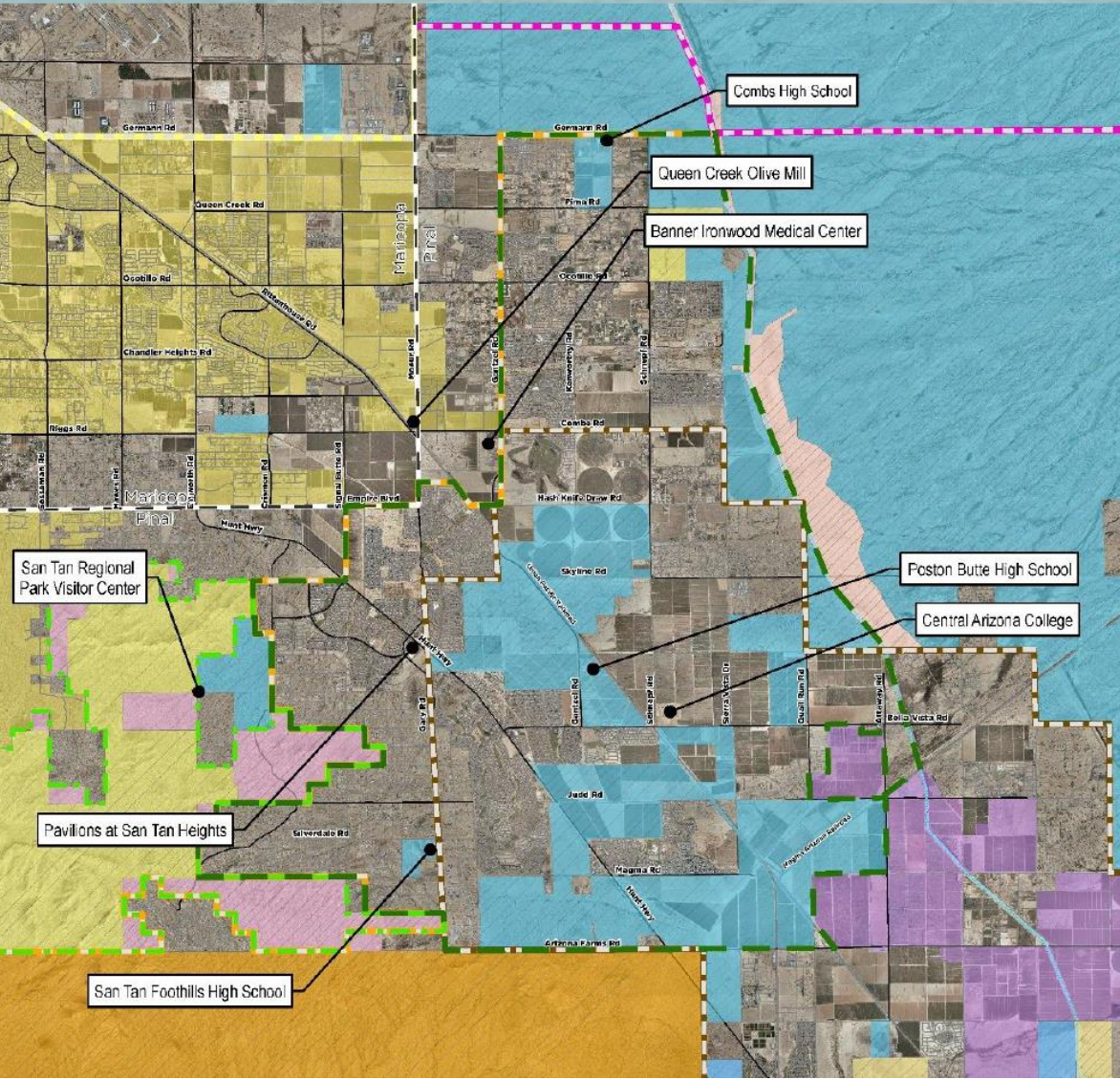
Michael Baker
INTERNATIONAL



Study Area Context



PINAL COUNTY
wide open opportunity



PINAL COUNTY
wide open opportunity

San Tan Valley Special Area Plan

Context Map

Legend

- Study Area (61.3 sq mi)
- Arterials
- Streets
- Railroad
- CAP Canal

Jurisdictional Boundaries

- Mesa Planning Boundary
- Apache Junction Planning Boundary
- Queen Creek Planning Boundary
- Florence Planning Boundary
- Queen Creek Town Limits
- Florence Town Limits
- San Tan Mountain Regional Park

Land Ownership

- County Land
- BLM
- State Trust
- Gila River Indian Reservation
- Bureau of Reclamation

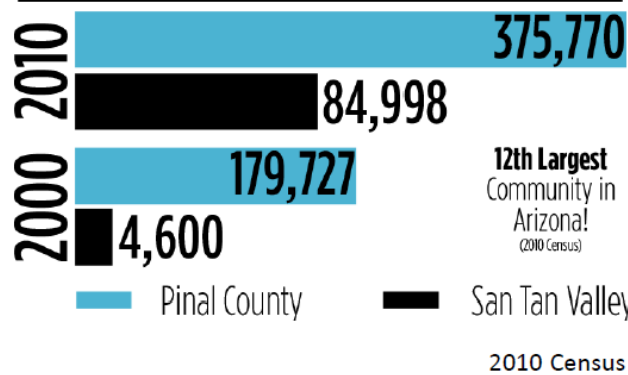


Owner	Acreage	Percent
Private	26,232.72	66.96%
State Trust	12,281.93	31.35%
BLM	478.77	1.22%
Bureau of Reclamation	183.80	0.47%
Total	39,177.22	100.00%

Demographic Trends & Benchmarking



Population Growth



2010 Census

2016 Median Household Income

San Tan Valley: \$59,385
 Town of Queen Creek: \$89,824
 Town of Florence: \$44,469
 Arizona: \$51,141

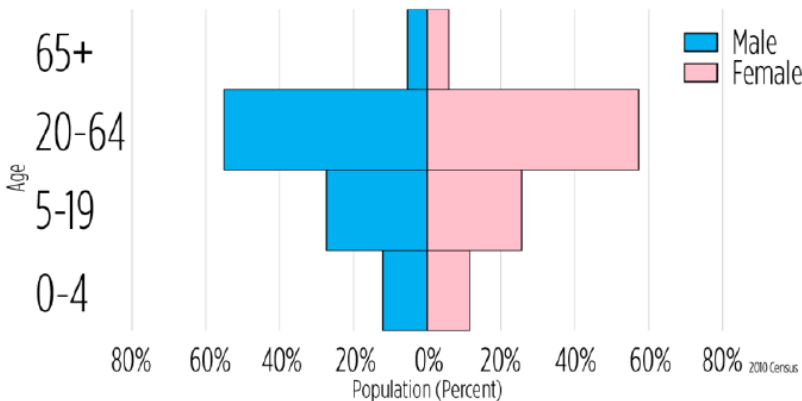
ESRI

Vehicle Ownership

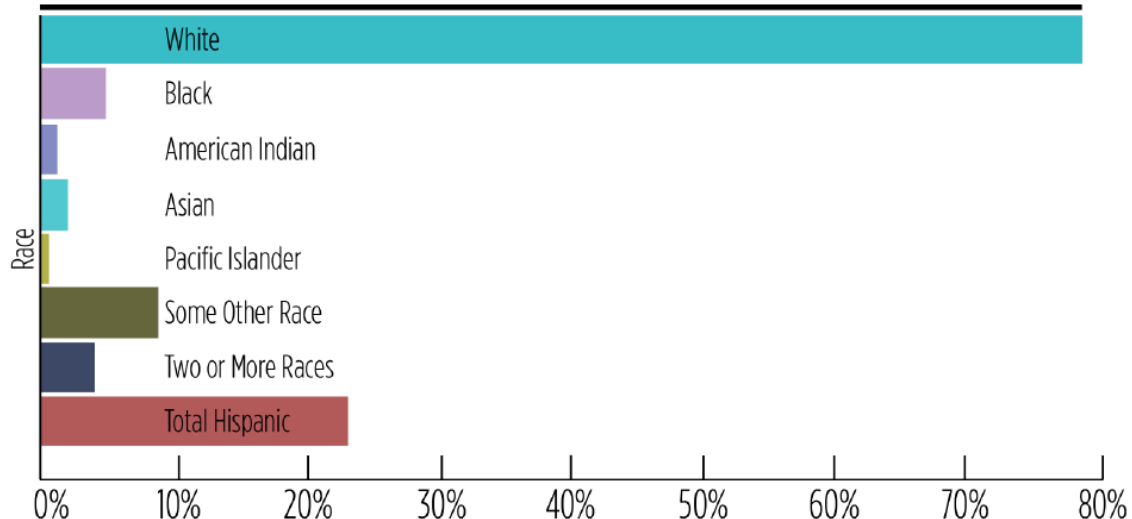
98.7%
 of San Tan Valley have access to 1 or more vehicles

ACS 2010-2014

Age Demographic



Race



Commuting Modes



ACS 2010-2014

Project Description



PINAL COUNTY
wide open opportunity

■ What this Area Plan is...

- A blueprint for future growth and development - amending the existing Comprehensive Plan
- Statement of policies that address land use, transportation, housing, community design, infrastructure, public facilities, health, and the natural environment.
- A framework for more specific planning
- A tool for education and communication
- A way to improve the quality of life in STV

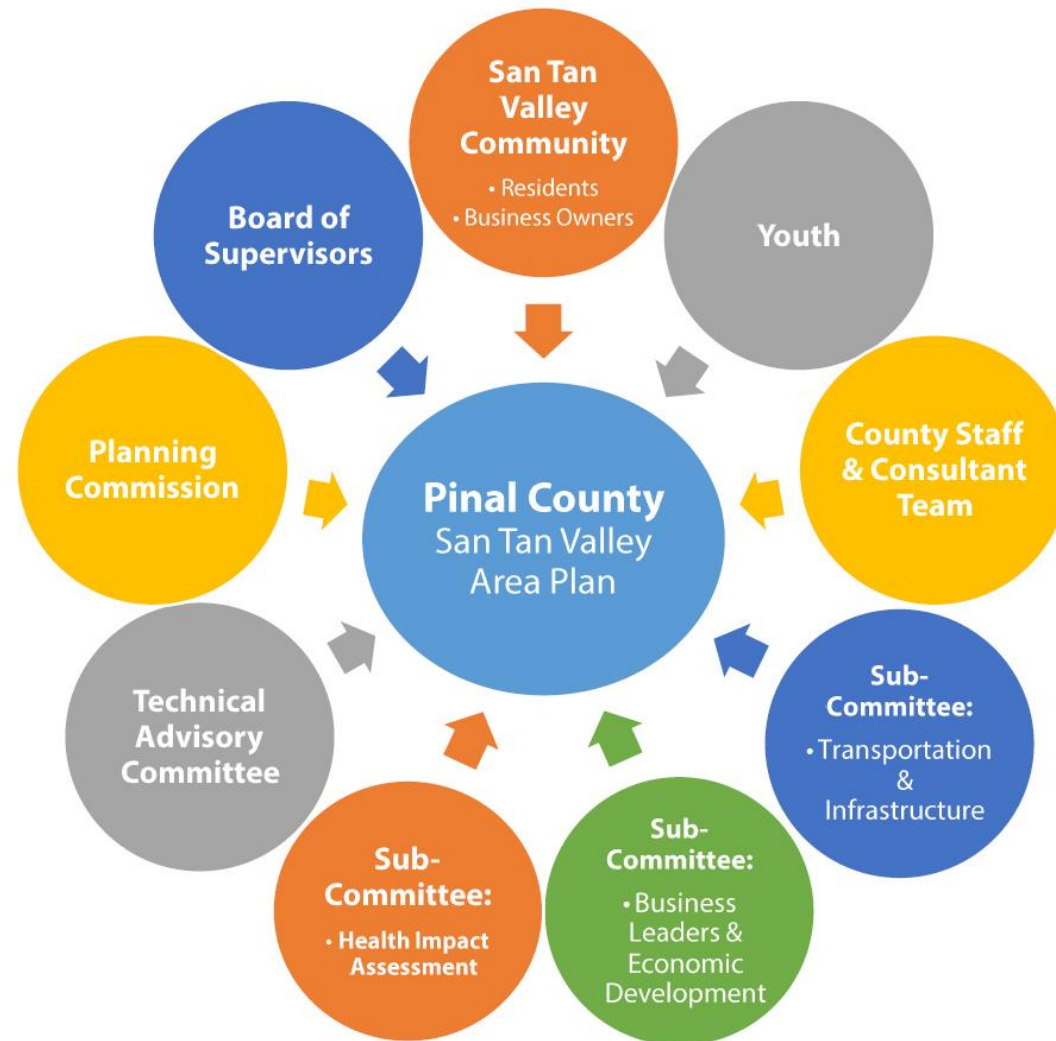
■ What this Area Plan is NOT...

- Any land use policies adopted as part of this area plan are policy, not regulations
- This plan is not zoning...properties retain all existing rights
- A rigid, static document
- A specific plan for a development project

Project Stakeholders



PINAL COUNTY
wide open opportunity



Health Impact Assessment (HIA) Advisory Committee



PINAL COUNTY
wide open opportunity

■ Representatives from the following organizations were invited to serve on this committee:

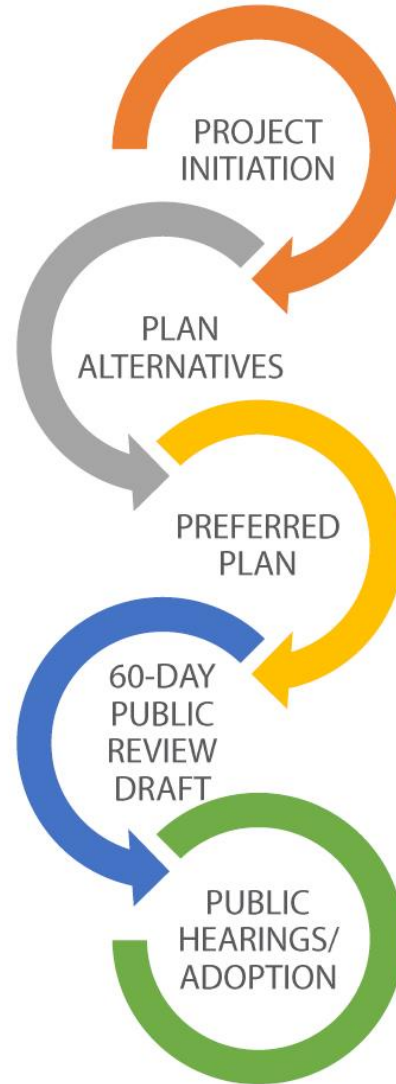
- Pinal County Health Department
- Arizona Department of Health Services
- Arizona Alliance of Livable Communities
- Banner Ironwood Hospital
- Sun Life Family Health Center
- Florence Unified School District
- J.O. Combs Unified School District
- Central Arizona College
- Leading Edge Academy
- American Leadership Academy
- Legacy Traditional San Tan Valley Campus
- Happy Valley School East Campus
- Eduprise
- Copper Basin YMCA
- United Way of Pinal County
- Pan de Vida

HIA Work Plan



PINAL COUNTY
wide open opportunity

- Milestone #2
- Prepare Land Use; Circulation; Economic Vitality; Open Space Alternative Scenarios
- **Complete HIA Assessment**



- Milestone #1
 - Project Kick-Off
 - **Complete HIA Screening & Scoping**
-
- Milestone #3
 - Prepare Fiscal Impact Analysis and Housing; Public Facilities; Character of Place Elements
 - **Complete HIA Recommendations and Reporting**

Project Timeline



PINAL COUNTY
wide open opportunity



HIA Role and Responsibility



PINAL COUNTY
wide open opportunity

- A source of insight specific to health issues/concerns within STV.
- A source of ideas to identify improvements needed to mitigate adverse health impacts in STV.
- A sounding board for ideas and plan proposals presented by community members, County Staff or the Consultant Team.
- Pass on knowledge to the community regarding the Area Plan and health related topics in STV.

Questions?

Rachel Zenuk, MPH

Rachel.Zenuk@pinalcountyz.gov

520-866-7317



P I N A L ♦ C O U N T Y

www.pinalcountyz.gov | facebook.com/PinalComDev